



## Newbridge, near St Just TR20

£285,000

3 1 1



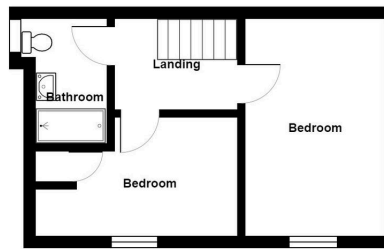
- THREE BEDROOM END OF TERRACE COTTAGE
- NO ONWARD CHAIN / CHAIN FREE
- ENCLOSED, PRIVATE GARDEN
- OFF STREET PARKING / DRIVEWAY

At the end of a small terrace of granite cottages is Rosemary House, a most surprisingly spacious and characterful home with a sunny, private garden, and parking for two/three vehicles that has been very lovingly refurbished to a high standard.

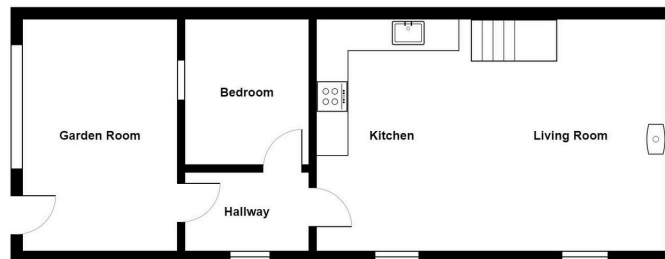


## Key Features

- THREE BEDROOM END OF TERRACE COTTAGE
- ENCLOSED, PRIVATE GARDEN
- BEAUTIFUL HAND MADE KITCHEN
- MULTI-FUEL STOVE IN LIVING ROOM
- EPC - F
- NO ONWARD CHAIN / CHAIN FREE
- OFF STREET PARKING / DRIVEWAY
- SUNNY ORANGERY / GARDEN ROOM
- ORIGINAL WOODEN FLOORBOARDS UPSTAIRS
- COUNCIL TAX BAND - C



First Floor



Ground Floor

All measurements are approximate and for display purposes only